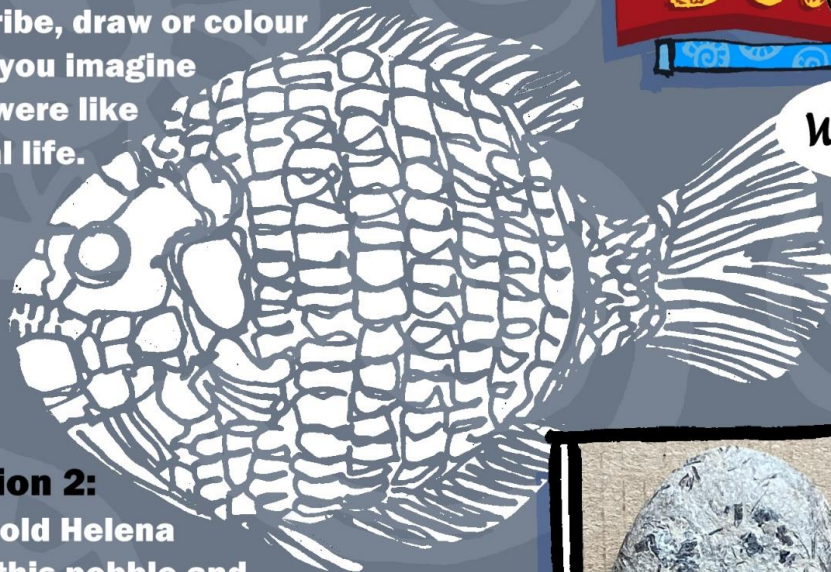
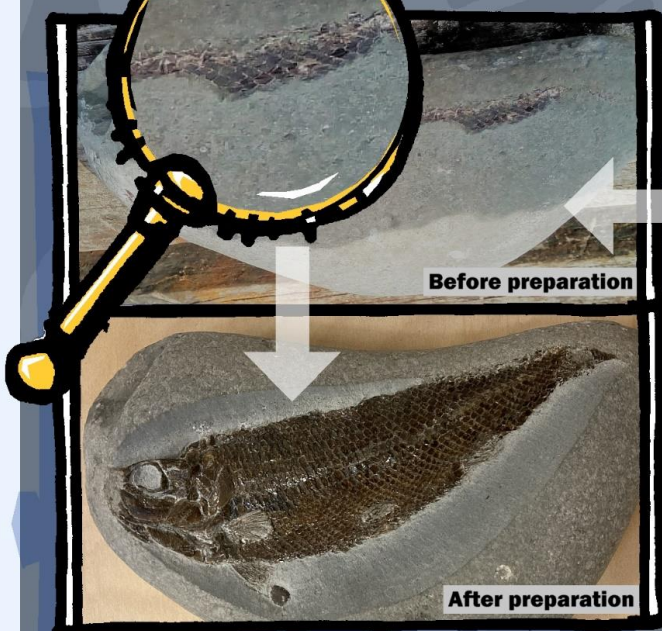


Something Fishy

Question 1: The minerals that form while a fish is fossilising cause the fossil to appear dark in colour, but the fish themselves may have been very different. Describe, draw or colour what you imagine they were like in real life.



WOW



Question 2: 5 year old Helena found this pebble and took it to show the wardens at Charmouth. What clues made her think it was a fossil? How did the wardens know what type of fossil was hiding inside?

Question 3: This fossil appears to have fish scales trapped inside it . . . What is it?



Answers to all of Tom & Mina's puzzles are on the CHCC website.